

on LINE on
on DEMAND on CALL

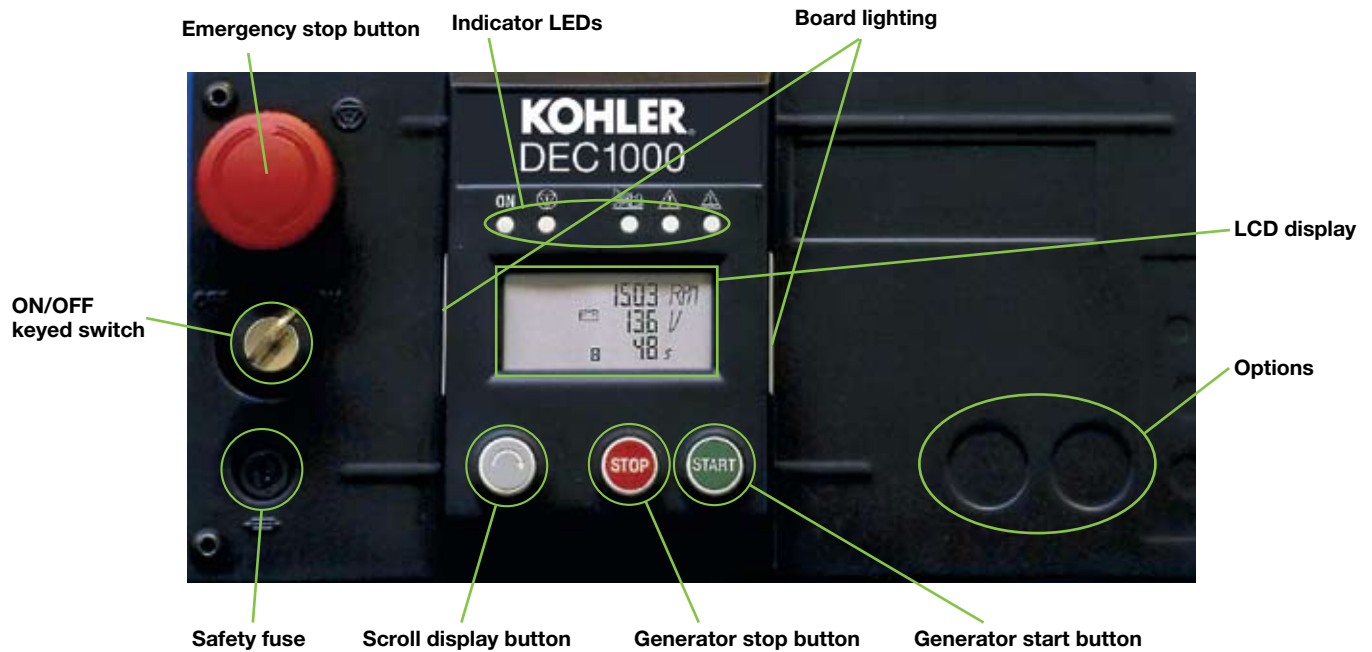
KOHLER Controls
DEC1000

KOHLER[®]

GENERATOR SET CONTROLLER DEC1000

THE KOHLER® DEC1000 CONTROLLER, standard on our 7.5 to 275 kVA generator sets, except kV range. Fitted with a polycarbonate front panel and an LCD screen, it has a user-friendly design and offers high-quality features for simple and reliable control of your generator set. The KOHLER DEC1000 operates either in manual or automatic mode.

FEATURES



KM11.5 generator, shown with DEC1000 control



KM30U generator, shown with DEC1000 control



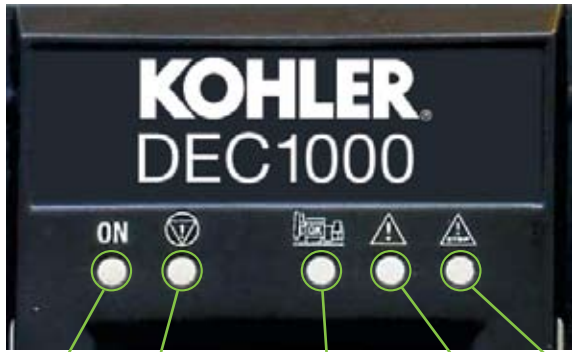
KD100U shown with DEC4000 or 1000 control



KD200 shown with DEC4000 or 1000 control

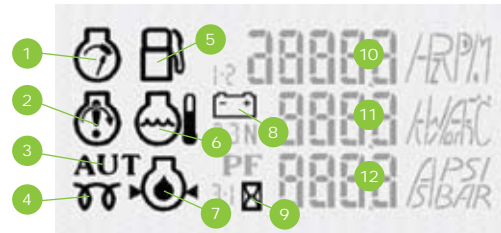
Operation, Alarms and Faults

Operation, alarm and fault LEDs



GREEN: Running
RED: Emergency stop active
GREEN: Generator set running
ORANGE: Alarm
RED: Fault

Operation, alarm and fault displays

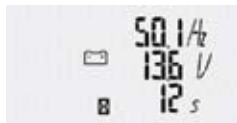


Operation		Alarms and faults	
3 + 9	AUTO mode	1	Overspeed
4 + 9	Air preheating	2	No start-up
5 + 10	Fuel level	5	Low fuel level
6 + 11	Water temperature	6	Water temperature
7 + 12	Oil pressure	7	Oil pressure
8 + 11	Battery voltage	8	Charge generator

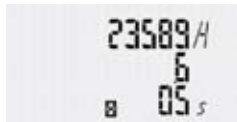
Measurements

Standard LCD display

Frequency (Hz)
 Battery voltage (V)
 Delay(1)(s)



Time meter
 1st line: Hours
 2nd line: tenths of hours
 Delay(1)(s)



Generator set speed (tr/mn)
 Battery voltage (V)
 Delay(1)(s)



Option LCD display

Fuel level (%)
 Water temperature (°C)
 Oil pressure (Bar)
 EU Units



Phase-to-phase voltages (V)

Fuel level (%)
 Water temperature (°F)
 Oil pressure (PSI)
 US Units



Amperages (A)

Phase voltages (V)



Frequency (Hz)
 Voltage (V)
 Amperage (A)

(1) Air preheat, restart, return to normal

Options

- CM301** Prewiring for auto start-up
- CM302** Automatic full pack: battery charge + relays and 220/240 V motor preheating resistor (in combination with CM301)
- CM303** Measuring card (U, V, I)
- CM304** Adjustable mains detector in cabinet
- CM305** Remote contact pack: generator running, general fault, alarm or low fuel level fault
- CM307** On-screen display of analog variables (OP, WT)

- CM308** Remote control with box
- CM311** Voltage adjustment potentiometer
- CM312** Speed adjustment potentiometer
- CM315** Audible alarm fitted in the cabinet
- CM315** Low water level safety device
- CM316** Low fuel level safety device
- CM318** Fixed earth fault protection
- CM320** Adjustable earth fault protection (Time and Threshold)

Kohler Asia Pacific Headquarters
Kohler Power Systems – Asia Pacific
7 Jurong Pier Road
Singapore 619159
Phone: +65 6264 6422
Fax: +65 6264 6455
E-mail: sales@kohler.com.sg
Web site: Kohler.com.sg

China Manufacturing

Kohler Power Systems, Ltd.
Kohler Road, Xin Bei District
Changzhou, Jiangsu 213032
China
Phone: +86 519 8515 2728
Fax: +86 519 592 2259 / 592 2250

India Manufacturing

Lombardini India Private Ltd
POB 754 J-2/1 MIDC Ind. Aerea
Chikalthana
431210 Aurangabad
India
Phone: +91 / 240/2471452
Fax: +91/240 / 2486234

Sales Offices

China

Kohler Power Systems – Asia Pacific
Shanghai Representative Office
Unit 19 B, Huamin Empire Plaza
726 Yan An Road (W)
Shanghai 200050 PRC
Phone: +86 21 5238 9966
Fax: +86 21 5238 5880
E-mail: inquiry@kohlerpower.com.cn
Web site: Kohler.com.sg

Kohler Power Systems – Asia Pacific
Beijing Representative Office
Unit 518, Talent International Building
No. 80 Guang Qu Men Inner Avenue
Chong Wen District
Beijing 100062 PRC
Phone: +86 10 5169 6700
Fax: +86 10 5169 6705
E-mail: inquiry@kohlerpower.com.cn
Web site: Kohler.com.sg

Kohler Power Systems – Asia Pacific
Shenzhen Office
Room 915, 9/F, Qiushi Center
Zhuzilin, Shennan Avenue
Futian District
Shenzhen
Guangdong 518040 PRC
Phone: +86 755 8831 6791
Fax: +86 755 8831 6790
E-mail: inquiry@kohlerpower.com.cn
Web site: Kohler.com.sg

Kohler Power Systems – Asia Pacific
Chengdu Office
Room 801, Minhang Zongnan Building
No. 19, 2nd Ring Road, Sec 2S
Chengdu 610041 PRC
Phone: +86 28 8290 9287
Fax: +86 28 8522 3611
E-mail: inquiry@kohlerpower.com.cn
Web site: Kohler.com.sg

Kohler Power Systems – Asia Pacific
Xi'an Office
Unit 5003, Western Electronic Trading City
No. 18, Dianzhiyilu, Xi'an
Shaanxi 710065 PRC
Phone: +86 29 8827 2260
Fax: +86 29 8827 2265
E-mail: inquiry@kohlerpower.com.cn
Web site: Kohler.com.sg

South Asia

Kohler India Corporation Pvt Ltd
#138/6, 6th 'A' Cross
Raj Mahal Vilas Extension
Sadashivnagar
Bangalore 560 080
India
Phone: +91 80 2361 6208 / 6831 / 0231
Fax: +91 80 2361 5972
E-mail: info@kohlerindia.com
Web site: Kohler.com.sg

Kohler India Corporation Pvt Ltd
'Tarangan', 1098/8-B,
Opp. DSK Toyota Showroom
Model Colony, Pune – 411 016
India
Phone: +91-20-25666311
Fax: +91 20 25666311
E-mail: info@kohlerindia.com
Web site: Kohler.com.sg

Kohler India Corporation Pvt Ltd
6th Floor, Office Tower,
Ambience Island,
NH-8, Gurgaon-122001
India
E-mail: info@kohlerindia.com
Web site: Kohler.com.sg

North Asia

Kohler Power Systems – Asia Pacific
North Asia Office
SBS Hills-II, No. 53
4-10-3, Yoga, Setagaya-Ku
Tokyo 158-0097
Japan
Phone: +81 3 6807 1730
Fax: +81 3 3708 4377
E-mail: kawasaki@kohler.co.jp
Web site: Kohler.com.sg

Kohler Power Systems – Asia Pacific
Room 1707 Lg Twintel 2
157-3 Samsung –Dong
Gangnam-Gu
Seoul 135-090
Korea
Phone: +82 2 563 9266
Fax: +82 2 563 9730
E-mail: chanusohn@kohler-korea.com
Web site: Kohler.com.sg

South East Asia & Taiwan

Kohler Power Systems – Asia Pacific
7 Jurong Pier Road
Singapore 619159
Phone: +65 6264 6422
Fax: +65 6264 6455
E-mail: sales@kohler.com.sg
Web site: Kohler.com.sg

Australasia

Kohler Power Systems – Asia-Pacific
C/O P O Box 324, Highgate
South Australia 5063
Phone: +61 439 338 166
Fax: +61 8 8338 6424
E-mail: bob.morgan@kohler.com.sg
Web site: Kohler.com.sg

KOHLER

Printed in Singapore
G12-317 2/08
©2008 by Kohler Co.

Use of this material for reproduction on the Internet and World Wide Web
is strictly prohibited without written permission from Kohler Co.

KOHLER®, ON™, and the color green are trademarks of Kohler Co.

ISO 9001
KOHLER
POWER SYSTEMS
NATIONALLY REGISTERED