

series: **GSW**60-505



OPEN SET

WATER COOLED

SOUND PROOF
WATER COOLED



PRAMAC Lifter Sp.A.
Località il Piano
53031 Casole d'Elsa (SI) - Italy



PRAMAC IBERICA S.A.
Pol. Ind. Los Meroños Ctra. Dolores Km 1
30700 Torre Pacheco (Murcia) - Spain

OPEN SET

WATER COOLED

series: **GSW**60-505



GSW 60-505:

Energy for public and industrial uses

With reliable and versatile accessories, these generators are able to meet many different needs, suitable for specific applications such as telecommunications.

Reliability

- Deutz engines extremely high load acceptance capacity ensures instant electricity supply.
- They respond quickly to load fluctuations. In addition, the application will not suffer from frequency deviations.
- Highly efficient alternators (Ⓜ).
- Constant supply guaranteed by the electronic voltage regulator under any generator operating condition.

Security

- The exhaust gas emissions meet the most restrictive regulations.
- Hot parts protection against accidental contact (Ⓜ).
- The engine protection (stop solenoid) guarantees the shutdown of the machine when an engine failure occurs.
- Moving and rotating parts protection against accidental contacts.
- Industrial silencer to reduce engine noise emissions.

Safety

- Visible and accessible emergency shutdown switch protects against incorrect use of the generator.
- All metal parts are connected to an external grounding point (Ⓜ). Fault currents are connected to the ground for your safety.

Large autonomy

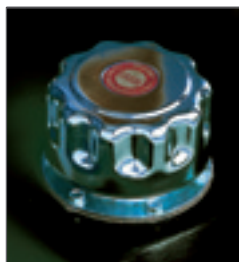
- High capacity fuel tank for longer work without fuel refilling (Ⓜ).

Easier to use

- Generating sets are delivered ready to start and they require no special foundations, so that they can be installed anywhere.
- A large number of optional available for any kind of special use you may require.
- Easy access to the fuel filling cap which is mounted on the base frame.
- High efficiency air filter (Ⓜ) with easy removable cartridge.

Economic

- The brushless construction of the generator assures a long service life.
- Engines with long maintenance intervals and low fuel consumption (Ⓜ).



The producer reserves the right to introduce changes to models and features without prior notice. Models, version and associated products characteristics can vary according to the markets.

Large autonomy

Extended fuel capacity means continuous performance.

Ease of handling

Easy transportation - less effort required to move the generator.

Security

Generators are safeguarded against unauthorised use and minimise the potential of accidental damage.

Economic

A long life time and very little maintenance mean very low operation costs.



GSW 60-505:
Suitable for specific applications

These generators are designed for stand-by applications, and fulfil the demand for "silent" power. Sturdy and reliable, like all Pramac machines, the "silent" power is guaranteed by full conformity to directive 2000/14/EC, related to environmental noise emissions.



Reliability

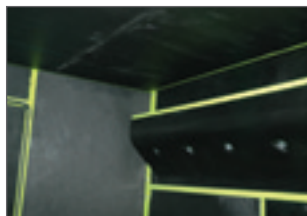
- Deutz engines extremely high load acceptance capacity ensures instant electricity supply.
- They respond quickly to load fluctuations. In addition, the application will not suffer from frequency deviations.
- Highly efficient alternators.
- Constant supply guaranteed by the electronic voltage regulator (t) under any generator operating condition.
- Rated capacity battery for immediate engine start.

Silent

- Soundproof canopy built in high quality steel and sound attenuating material reduces noise emissions to a minimum.
- Highly efficient silencer reduces noise emissions for sensitive locations operating.
- Anti-vibration isolators ensure vibration free operation.
- Certification of approval in compliance with section 8 of directive 2000/14/EC relating to environmental noise emission by equipment for outdoor use.

Security

- The exhaust gas emissions meet the most restrictive regulations.
- The engine protection (stop solenoid) guarantees the shutdown of the machine when an engine failure occurs.
- Access doors are equipped with lockable handles.
- Soundproofing materials (t) are highly fireproof.



Facility of handling

- A central lifting bridge (t) allows the unit to be easily lifted by a crane.



Safety

- All metal parts are connected to an external grounding point. Fault currents are connected to the ground for your safety.
- Visible and accessible emergency shutdown switch protects against incorrect use of the generator.
- Control and power access are protected by a lockable front door (t).



Economic

- The brushless construction of the generator assures a long service life.
- Engines with long maintenance intervals and low fuel consumption (t).



Easier use

- A sturdy manual oil drain pump is included.
- Front panels are completely detachable. Easy access (t) for radiator cleaning and alternator service.
- Engine service points are accessible from one side through large doors.



The producer reserves the right to introduce changes to models and features without prior notice. Models, version and associated products characteristics can vary according to the markets.

Reliability

Engine and alternator ensure a constant, high quality power supply for the most demanding applications.

Economic

A long life time and very little maintenance mean very low operation costs.

Easier to use

New design gives easy access for maintenance and repair work.

Safety

Generating sets designed with safety in mind - our commitment to personal protection.

TECHNICAL FEATURE

series: **GSW**60-505

		DEUTZ								
		WATER COOLED								
		GSW60	GSW75	GSW105	GSW135	GSW160	GSW315	GSW380	GSW460	GSW505
GEN SET										
Prime power (PRP)	kVA/kWe	58/46	74/59	102/82	135/108	159/127	314/251	381/305	460/368	510/408
Emergency power (LTP)	kVA/kWe	63/50	78/63	108/86	142/113	167/134	330/264	412/330	529/423	560/448
Frequency	Hz	50	50	50	50	50	50	50	50	50
Three Phases Voltage	V	400/230	400/230	400/230	400/230	400/230	400/230	400/230	400/230	400/230
ENGINE										
Brand		DEUTZ								
Model		BF4M2012G2	BF4M2012C	BF4M1013EC	BF6M1013E	BF6M1013EC	BF6M1015CG1	BF6M1015CP	BF8M1015CG2	BFM1015CP
Prime power	kWm	52	66,1	91,1	117,8	138,1	271,2	327,3	391,3	433,9
Speed	rpm	1500	1500	1500	1500	1500	1500	1500	1500	1500
Intake		TURBO	TURBO, CAC		TURBO	TURBO, CAC				
Cooling		WATER								
Cylinders		4 IN LINE	4 IN LINE	4 IN LINE	6 IN LINE	6 IN LINE	6V	6V	8V	8V
Displacement	cm3	4040	4040	4760	7150	7150	11900	11900	15900	15900
Standard governor		MECHANICAL					ELECTRONIC			
Cooling air flow	m3/h	5400	4680	6120	9000	10800	20952	24120	24120	33120
LUBRICATION SYSTEM										
Lubricating oil capacity (1)	l	8,5	8,5	11	20	20	34	34	45	45
FUEL CONSUMPTION										
75% load	l/h	10,3	11,7	16,7	21,9	34,5	48,9	60,8	70,9	81,7
100% load	l/h	13,7	15,7	22,2	29,9	32,7	65,2	81,0	94,6	109,0
ELECTRIC SYSTEM										
Battery (ACP)	Ah	2x145	2x145	2x145	2x145	2x145	2x145	2x145	2x145	2x145
Starting motor	kW	3	3	3,1	3,1	3,1	5,4	5,4	5,4	5,4
ALTERNATOR										
Brand		STAMFORD								
Model		UCI 224E	UCI 224F	UCI 274C	UCI 274E	UCI 274F	HCKI 444D	HCKI 444F	HCI 544D	HCI 544D
Efficiency at 3/4	%	88,8	89,9	90,3	91,7	92,3	93,0	93,4	94,3	94,3
Power at 27°C	kVA/kWe	61/50	77/62	106/85	145/116	170/136	320/256	427/342	575/460	575/460
Insulation		CLASS H								
Protection		IP 23								
Regulation		ELECTRONIC (+/- 1.5% WITH 4% ENGINE GOVERNING)					ELECTRONIC (+/- 1% WITH 4% ENGINE GOVERNING)			

OPEN SET WATER COOLED										
MODEL		GSW60	GSW75	GSW105	GSW135	GSW160	GSW315	GSW380	GSW460	GSW505
Autonomy (75%load)	h	23,4	20,4	14,4	10,4	9,8	8,9	11,7	10,9	8,9
FUEL TANK CAPAC.	l	240	240	240	240	240	440	720	720	720
Dimensions (LxWxH)	mm	2200x1000x1620	2200x1000x1620	2200x1000x1620	2600x1000x1620	2600x1000x1620	3000x1400x1950	3000x1600x2160	3200x1600x2185	3200x1600x2200
Weight	kg	865	945	1326	1545	1615	2600	2800	3730	3780
SOUND PROOF WATER COOLED										
Autonomy (75%load)	h						12,5	7,9	10,5	9,1
FUEL TANK CAPAC.	l						480	480	750	750
Sound power level	LWA						99	99	100	100
Sound pressure at 7m	dB (A)						74	74	75	75
Dimensions (LxWxH)	mm						4000x1800x2250	4000x1800x2250	4000x2000x2250	4000x2000x2250
Weight	kg						3800	4000	4975	5025

PRIME POWER (PRP) (ISO 8528) RATING: PERMISSIBLE POWER OUTPUT AT VARIABLE LOAD FOR AN UNLIMITED NUMBER OF HOURS. A 10% OVERLOAD CAPABILITY IS AVAILABLE
 EMERGENCY POWER (LTP) (ISO 8528) RATING: STANDBY POWER AT VARIABLE LOAD. NO OVERLOAD CAPACITY IS AVAILABLE
 ALL MODELS COMPLY WITH TA LUFT-4000 REGULATION

Pramac (Asia) Pte Ltd

29 Tuas South Street 1, Singapore 638036.