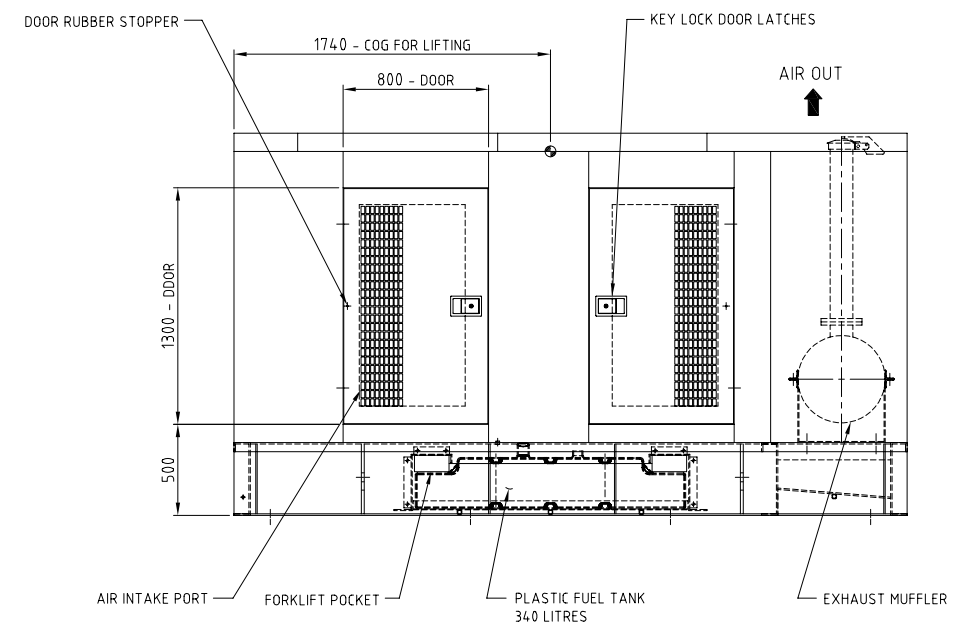
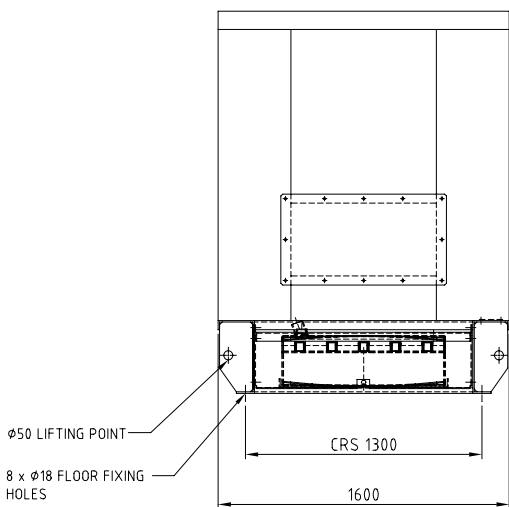
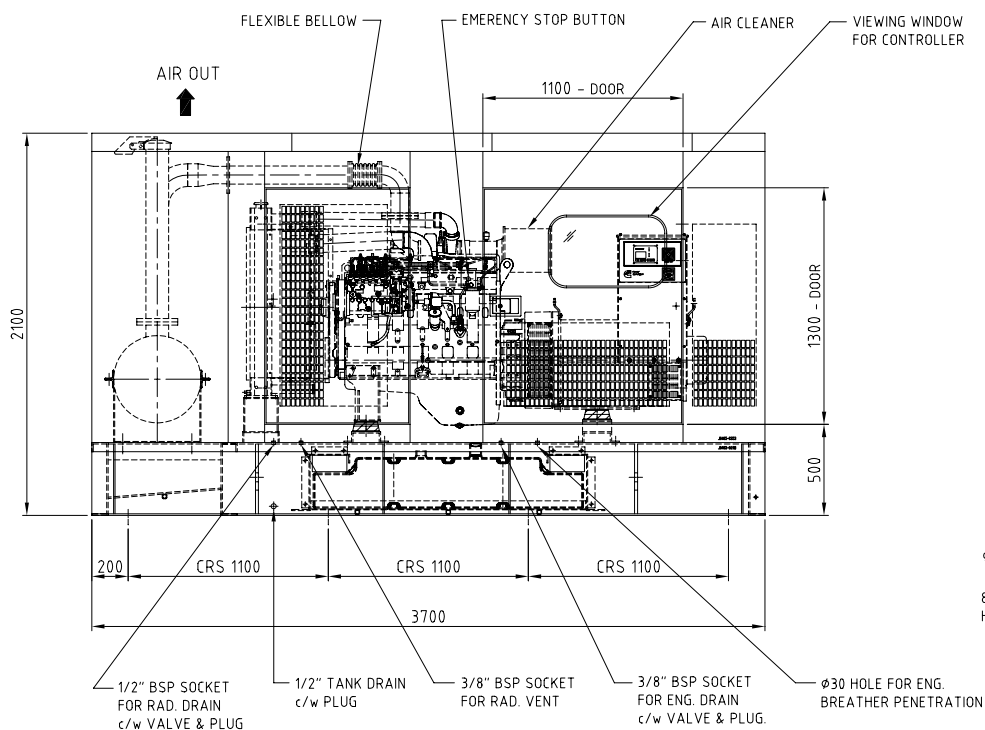
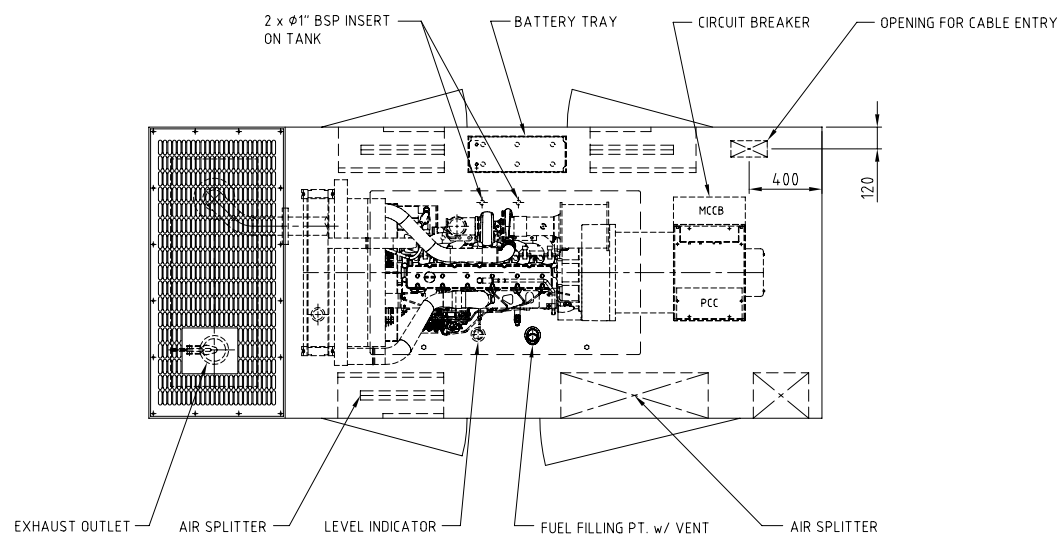


J0500-0698

REL NO	LTR	NO	REVISION	ZONE	DR	CHKR	APPROVED	DATE
-	-	1	1ST RELEASE	-	SC	CL	CL	17-AUG-06
-	A	1	ADD SOCKET OUTLETS AND COG FOR LIFTING	-	SC	CL	CL	10-OCT-06

NOTE:

- GENSET ASSEMBLY : CUMMINS 6CTA8.3 G2 ENGINE
NEWAGE UC274H ALTERNATOR
50°C AMBIENT RADIATOR
- ESTIMATED WEIGHT :
DRY - 3100 KG
WET - 3440 KG
- MAXIMUM FUEL TANK CAPACITY - 340 LITRES
- ESTIMATED FREE FIELD SPL @ 1 METRE 85 dB(A)
- PAINT (CANOPY OUTSIDE) - MUNSSELL JADE GREEN.



DO NOT SCALE PRINT		TOLERANCE UNLESS OTHERWISE SPECIFIED		SEM TO X	X	NAME	DATE	 CUMMINS POWER GENERATION <small>44 PIONEER SECTOR 2 SINGAPORE 03080</small>	TITLE CANOPY OUTLINE STOCK SPEC.
mm	mm	Inch	Inch	COPY	X	DR	- S.CHUA		
X ±1	X ±1	X ±1	X ±1	THE 90° ANGLE PROJECTION		CHKR	SC	- CLIM	17-AUG-06
X ±.5	X ±.5	X ±.25	X ±.25	THIS DOCUMENT IS THE PROPERTY OF CUMMINS POWER GENERATION. IT CONTAINS PROPRIETARY AND CONFIDENTIAL INFORMATION WHICH MUST NOT BE REPRODUCED, COPIED OR DISCLOSED OTHER THAN AS EXPRESSLY AUTHORIZED BY CUMMINS POWER GENERATION OR ITS REPRESENTATIVE.		APPROVED	- CLIM	17-AUG-06	MODEL FIRST USED ON C200D5S-STK-CPY
0.05-4.99	+0.15/-0.08	0.04-200	+0.06/-0.03			SITE CODE PGS		DWG NO. J0500-0698	
5.00-9.99	+0.20/-0.10	201-421	+0.08/-0.04			SHEET 1 of 1		PGF REF. :	
10.00-17.49	+0.25/-0.13	422-703	+0.10/-0.05						
17.50-24.99	+0.30/-0.15	704-999	+0.12/-0.05						

METRIC DWG
AUTOCAD DWG

SCALE 1/20

PGS

J0500-0698

1 of 1

PGF REF. :